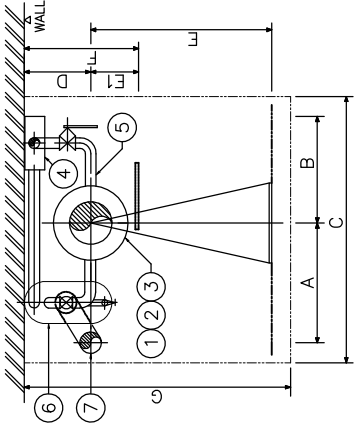
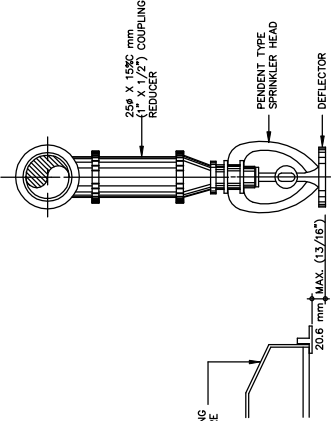


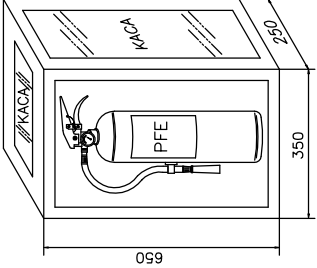
KATUP KENDALI UTAMA SPRINKLER  
SPRINKLER MAIN CONTROL VALVE



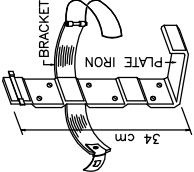
TAMPAK ATAS  
TOP VIEW



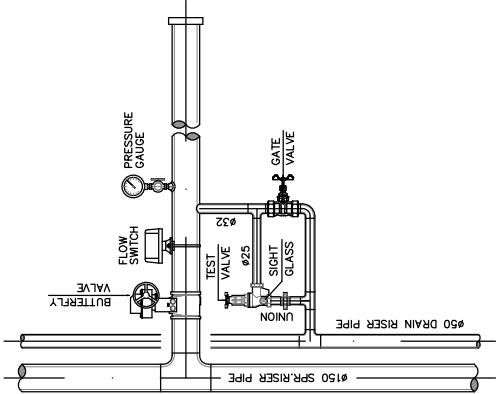
TYPICAL INSTALLATION OF  
PENDENT TYPE SPRINKLER HEAD  
ON AREAS W/OUT CEILING



BOX PORTABLE FIRE EXTINGUISHER  
(AREA PARKIR)

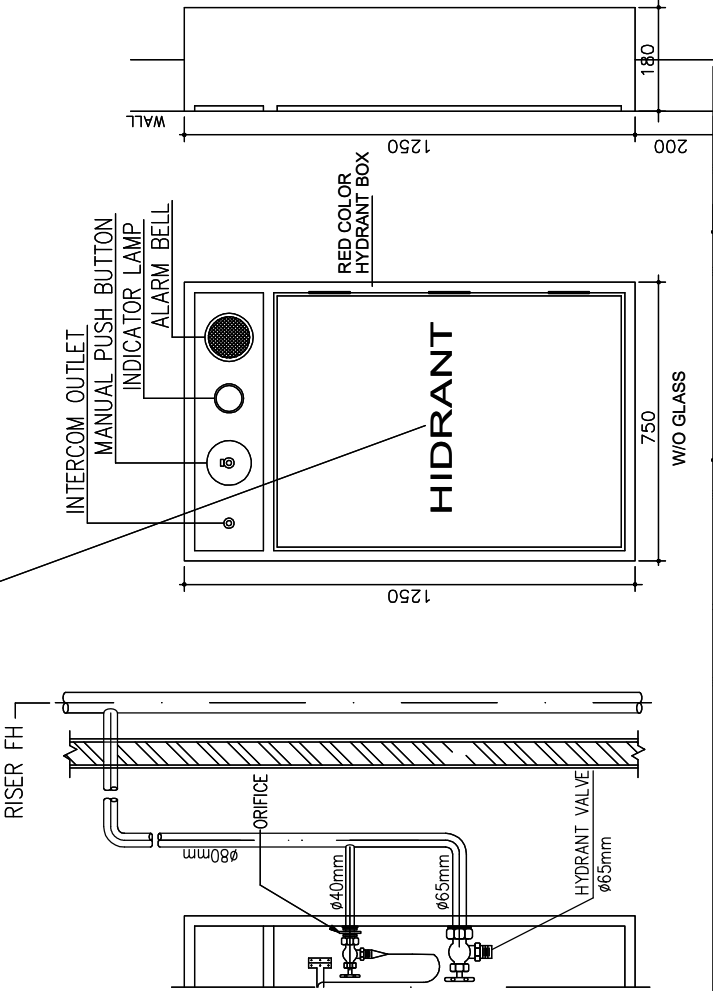


PFE HANGER

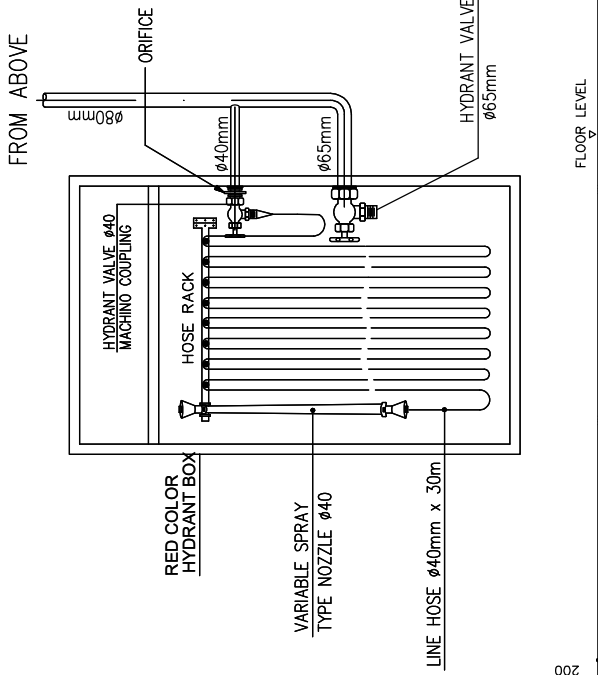


- CATATAN :  
NOTES :
1. PIPA TEGAK SPRINKLER  
STOP VALVE WITH  
GATE TYPE
  2. GATE VALVE
  3. SPRINKLER ALARM VALVE WET TYPE  
SISTEM BASAH
  4. ALARM GONG
  5. TEST & DRAIN PIPING  
PIPA LUI  
FUNNEL  
CORONG
  6. SPRINKLER DRAIN RISER
  7. PIPA TEGAK PEMBUANGAN  
STEEL SLEEVE
  8. POTONGAN PIPA DENGAN DIPAKAL
- | D      | A   | B   | C    | D   | E    | E1  | F   | G    |
|--------|-----|-----|------|-----|------|-----|-----|------|
| 100/4" | 450 | 400 | 1100 | 250 | 710  | 180 | 450 | 1000 |
| 150/6" | 450 | 400 | 1100 | 250 | 950  | 220 | 500 | 1200 |
| 200/8" | 450 | 400 | 1100 | 250 | 1200 | 290 | 500 | 1500 |
- GAMBAR INI DIBUAT DENGAN DASAR SPRINKLER ALARM VALVE MEREK GW  
THIS ARRANGEMENT ON GW SPRINKLER ALARM VALVE

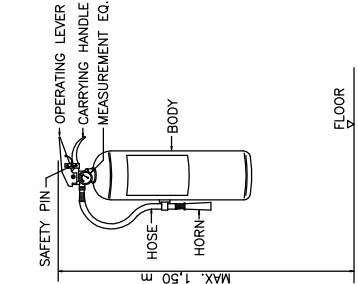
TULISAN PUTH  
BERFLURESENSI  
KATUP KENDALI CABANG SPRINKLER  
SPRINKLER BRANCH CONTROL VALVE



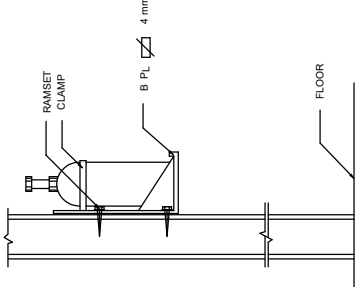
INDOOR HYDRANT BOX (HDB)  
CLASS III NFPA



- CATATAN :  
1. KETEBALAN PLAT HYDRANT  
(INDOOR & OUTDOOR) MINIMAL  
- STEEL PLATE : 1.2 mm  
- FINISHING : 0.2 mm  
2. FINISHING PLAT HARUS DENGAN  
POWDER COATING  
3. WARNA HYDRANT BOX HARUS  
MENGIKUTI PERMINTAAN OWNER/  
PEMBERI TUGAS ATAU MENGACU  
PADA PERATURAN PERDA SETEMPAT  
/STANDARD DINAS PEMADAM -  
KEBAKARAN  
4. COUPLING MENGGUNAKAN  
VANDLE HEIDE ATAU MENGACU  
PADA PERATURAN PERDA SETEMPAT  
/STANDARD DINAS PEMADAM -  
KEBAKARAN  
5. HYDRANT BOX HARUS DILENGKAPI  
KUNCI & DILETAKAN DIDALAM BOX  
DENGAN BREAK GLASS  
6. PEMBUATAN LUBANG (HOLE) UNTUK  
PERALATAN/PENGGABELAN  
FIRE ALARM LINGKUP PEKERJAAN  
HYDRANT



PORTABLE FIRE EXTINGUISHER  
(AREA UTILITAS M/E)



DETAIL PENEMPATAN  
PORTABLE FIRE EXTINGUISHER  
(AREA UTILITAS M/E)



APPROVED : .../.../...

(signed) ..... (name)  
..... (position)  
..... (Dep./Div.)

PROJECT

BPD  
KELAPA SAWIT

Jl. Medan Merdeka Tim, RT.7/RW.1, Gambir,  
Kec. Gambir, Kota Jakarta Pusat, Daerah  
Khusus Ibukota Jakarta 10110

INTERIOR DESIGN CONSULTANT

PT. **M** ADEA  
AGKASAMA  
Jl. Heli Sutri No. 4 Gd. Sakura Lt. 2 Room 201  
Kel. Kampung Bali, Kec. Tanah Abang, Jakarta Pusat  
Telp. 021 - 2303483, Fax. 021 - 2303483  
APPROVED : //



PT. **DUTA PRATAMA ENGINEERING**  
MECHANICAL & ELECTRICAL ENGINEER  
Ruang Tembok Merpati Blok A No. 25, A. Bina Muli No. 1  
Kec. Kuningan, Kota Jakarta Selatan, Daerah  
Khusus Ibukota Jakarta 10110  
Email : dpe@mepe.com, dpe@mepe.com

MEP CONSULTANT

DRAWING TITLE

DETAIL PERALATAN - 1

SCALE : NTS

ALL MEASUREMENT MUST BE CHECKED AT BY SITE  
BY THE CONTRACTORS AND ANY DIFFERENCES  
REPORTED/NOTIFIED TO THE DESIGNER FOR  
CLARIFICATION BEFORE PROCEEDING.

#

REVISION : R-1

TENDER

DATE : 2024/05/10

DRAWING FOR

DATE : 15/05/24

PAGE

PK-302

DRAWING NUMBER